

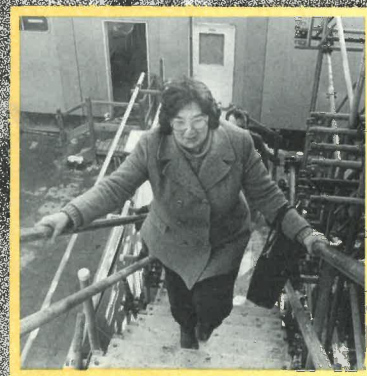
DESIGN: DIANNE CERESA, PRINT
PRODUCTION: ANDERSON / FRASER, PHOTOS:
BRENDA PRINCE / FORMAT AND MATRIX

MATRIX

FEMINIST ARCHITECTURAL
CO-OPERATIVE LIMITED

62 BEECHWOOD RD, LONDON E8 3DY
TEL 01-249 7603

**FREE
ARCHITECTURAL
SERVICES FOR
WOMEN'S
GROUPS IN
GREATER
LONDON**



■ What is Matrix?

Matrix is a multi-racial, non-profit-making women's architectural co-operative. We are partly funded by the London Borough's Grants Scheme. We can therefore do free work for women's groups and groups that benefit women. We want to prioritise Black women's groups, Irish women's groups and lesbian groups, since these groups have traditionally had less access to architectural services than other women's groups.

■ What work can we help you with?

FINDING PREMISES

We can talk to you about the kind of spaces to look for and suggest various ways of finding them. Finding a building involves dealing with local councils, which we can help with.

ACCESSING PREMISES

We can look at a building you've found or your current premises to see:

- if there is enough space
- whether the building is structurally sound
- how to provide wheelchair access
- how fire and other statutory requirements affect the building
- how much any alterations would cost.

GETTING FUNDING

We can write an architectural report called a feasibility study to include with your grant applications. This usually contains a description of the building, the specific work needed, drawing of

the building and proposed alterations, and a cost estimate. The report reassures funding bodies that they will be granting a sensible amount of money for a sensible building.

MODELS AND WORKSHOPS

We can make models, drawings and give workshops to help women's groups understand and take part in the design process.

■ Courses for women

We run short courses for women on reading architectural drawings and the basics of technical drawing. These courses can be tailored to suit the specific needs of your group. Please contact us if you're interested.

■ What must you do if you want us to work with you?

If you think that your group will need advice on any of the above, please contact us at an early stage. It will, for example, take us about 6 weeks to fit a full feasibility study into our work programme and it takes an average of 4 weeks to do a full feasibility study. So, if you need a study done by the end of May, you'll need to contact us at the latest by mid-March.

If you fall within our criteria for free work, we'd be happy to meet with you to discuss your needs further. We could come to visit you, or you'd be very welcome to come and see us. Please note that our premises are wheelchair accessible - for full access details, please contact us.